

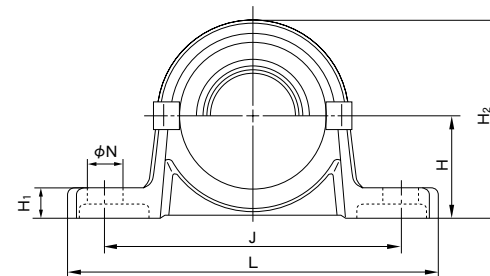
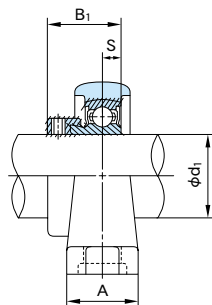
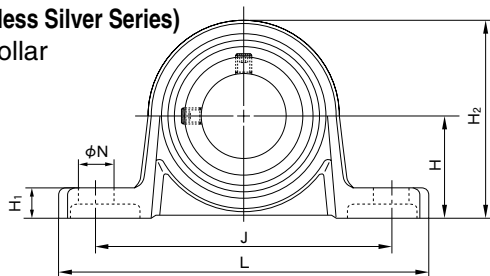
## Silver series Pillow Block Units

UP type  
MUP type (Stainless Silver Series)

With eccentric collar

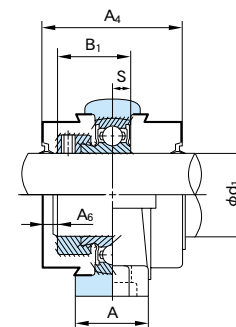
Cylindrical bore

Shaft dia. : 8 ~ 30mm



1N=0.102kgf

With steel covers



### UP type

Shaft dia. d <sub>1</sub> (mm)	Unit No.	Boundary dimensions (mm)											Bolt size	Bearings			Housing No.	Unit No. with covers	Cover No. (Reference)			Mass of Unit (g)	
		H	L	A	JS	N	H <sub>1</sub>	H <sub>2</sub>	B <sub>1</sub>	A <sub>4</sub>	A <sub>6</sub>	No.		Basic load rating (N)		Covers with rubber seal (End cover on one side)			Cover with rubber seal	Side end cover	standard	with steel cover	
														Cr	Cor								
10	UP000	18	67	16	53	7	6	35	17.5	4	33	2	M 6	U000+ER	4600	2000	P000	UP000C(E)	000CP10	000CPE	77	85	
12	UP001	19	71	16	56	7	6	38	17.5	4	33	2	M 6	U001+ER	5100	2400	P001	UP001C(E)	001CP12	001CPE	91	100	
15	UP002	22	80	16	63	7	7	43	18.5	4.5	34	2	M 6	U002+ER	5600	2800	P002	UP002C(E)	002CP15	002CPE	125	135	
17	UP003	24	85	18	67	7	7	47	20.5	5	38	2	M 6	U003+ER	6000	3300	P003	UP003C(E)	003CP17	003CPE	156	170	
20	UP004	28	100	20	80	10	9	55	24.5	6	46	3	M 8	U004+ER	9350	5100	P04-5	UP004C(E)	04-5CP20	04-5CPE	230	250	
25	UP005	32	112	20	90	10	10	62	25.5	6	47	3	M 8	U005+ER	10100	5800	P05-6	UP005C(E)	05-6CP25	05-6CPE	294	315	
30	UP006	36	132	26	106	13	11	70	26.5	6.5	50	4	M10	U006+ER	13200	8300	P06-7	UP006C(E)	06-7CP30	06-7CPE	454	480	
<i>8</i>	<i>UP 08</i>	<i>15</i>	<i>55</i>	<i>13</i>	<i>42</i>	<i>4.8</i>	<i>5</i>	<i>29</i>	<i>15</i>	<i>3.5</i>	—	—	<i>M 4</i>	<i>U08+ER</i> <sup>(1)</sup>	<i>3300</i>	<i>1260</i>	<i>P08</i>	—	—	—	<i>47</i>	—	

Notes: Set screw type U08X is also available and the width of inner ring is 12mm.  
Remarks (1): Please contact NACHI for units number appeared in italic.

Remarks (2): Examples of number of units with covers:

With cast cover { Covers with rubber seal on both sides : UP005C  
An end cover and a cover with rubber seal : UP005E

### MUP type (Stainless Silver Series)

Shaft dia. d <sub>1</sub> (mm)	Unit No.	Boundary dimensions (mm)											Bolt size	Bearings			Housing No.	Unit No. with covers	Cover No. (Reference)			Mass of Unit (g)	
		H	L	A	JS	N	H <sub>1</sub>	H <sub>2</sub>	B <sub>1</sub>	A <sub>4</sub>	A <sub>6</sub>	No.		Basic load rating (N)		Covers with rubber seal (End cover on one side)			Cover with rubber seal	Side end cover	standard	with steel cover	
														Cr	Cor								
10	MUP000	18	67	16	53	7	6	35	17.5	4	33	2	M 6	MU000+ER	3900	1550	P000Z3	MUP000C(E)	000CP10	000CPE	77	85	
12	MUP001	19	71	16	56	7	6	38	17.5	4	33	2	M 6	MU001+ER	4300	1900	P001Z3	MUP001C(E)	001CP12	001CPE	91	100	
15	MUP002	22	80	16	63	7	7	43	18.5	4.5	34	2	M 6	MU002+ER	4750	2250	P002Z3	MUP002C(E)	002CP15	002CPE	125	135	
17	MUP003	24	85	18	67	7	7	47	20.5	5	38	2	M 6	MU003+ER	5100	2650	P003Z3	MUP003C(E)	003CP17	003CPE	156	170	
20	MUP004	28	100	20	80	10	9	55	24.5	6	46	3	M 8	MU004+ER	7900	4000	P04-5Z3	MUP004C(E)	04-5CP20	04-5CPE	230	250	
25	MUP005	32	112	20	90	10	10	62	25.5	6	47	3	M 8	MU005+ER	8600	4650	P05-6Z3	MUP005C(E)	05-6CP25	05-6CPE	294	315	
30	MUP006	36	132	26	106	13	11	70	26.5	6.5	50	4	M10	MU006+ER	11300	6600	P06-7Z3	MUP006C(E)	06-7CP30	06-7CPE	454	480	

Remarks (2): Examples of number of units with covers:

With cast cover { Covers with rubber seal on both sides : MUP005C  
An end cover and a cover with rubber seal : MUP005E